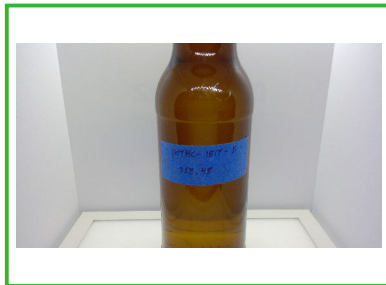


Fulton Beer
2540 2nd St NE
Minneapolis, MN 55418
mikey@fultonbeer.com
(612) 845-5119

Sample: 2307AIT0423.0997

Strain: N/A
Batch#: ; Batch Size: g
Sample Received: 07/18/2023; Report Created: 07/19/2023

BOTHC-1817-B
Ingestible, Beverage



0.001%

4.6 mg/serving

Total THC

<LOQ

<LOQ

Total CBD

0.001%

4.6 mg/serving

Total Cannabinoids

Cannabinoids

Date Tested: 07/19/2023

Analytes	%	mg/g	mg/ml	mg/serving	LOQ
CBC	<LOQ	<LOQ	<LOQ	<LOQ	0.001
CBD	<LOQ	<LOQ	<LOQ	<LOQ	0.001
CBDa	<LOQ	<LOQ	<LOQ	<LOQ	0.001
CBDV	<LOQ	<LOQ	<LOQ	<LOQ	0.001
CBG	<LOQ	<LOQ	<LOQ	<LOQ	0.001
CBGa	<LOQ	<LOQ	<LOQ	<LOQ	0.001
CBL	<LOQ	<LOQ	<LOQ	<LOQ	0.001
CBN	<LOQ	<LOQ	<LOQ	<LOQ	0.001
Δ8-THC	<LOQ	<LOQ	<LOQ	<LOQ	0.001
Δ9-THC	0.001	0.013	0.013	4.592	0.001
THCa	<LOQ	<LOQ	<LOQ	<LOQ	0.001
THCVa	<LOQ	<LOQ	<LOQ	<LOQ	0.001

Method: HPLC
Total THC = THCa * 0.877 + Δ9-THC
Total CBD = CBDa * 0.877 + CBD

Total Cannabinoids represents the sum of all cannabinoids in the table above.
Results are reported on a dry weight basis: Cannabinoid % / (1.0 - moisture content % / 100) = Dry weight cannabinoids %
LOQ = Limit of Quantitation

Summary

4150 98th Ave S
Fargo, ND
(888) 897-4367
www.hempinspection.com




John Schmidt
Analytical Chemist



Confident Cannabis
All Rights Reserved
(866) 506-5866

This product has been tested by Adams Independent Testing using valid testing methodologies. Values reported apply only to the product tested and only as the sample was received. Adams Independent Testing makes no claims as to the efficacy, safety, or other risks associated with any detected or nondetected level of any compounds reported herein. This Certificate shall not be reproduced except in full, without the written approval of Adams Independent Testing. Test results that are Pass/Fail are reported using the Oregon Health Authority, Public Health Division - Chapter 333-007-0320, effective 1/1/2021. Results above the Limit will be considered Fail and will be in red. This is for informational purposes only and can be changed upon request. Measurement Uncertainty is not used for pass/fail conditions but available upon request.